

Changes for the Better

MULTIMEDIA DATA/VIDEO PROJECTORS



Our New Standard... Their New Benchmark...
Engineered for Richer Colors and High Brightness.

WIRELESS **DVI**



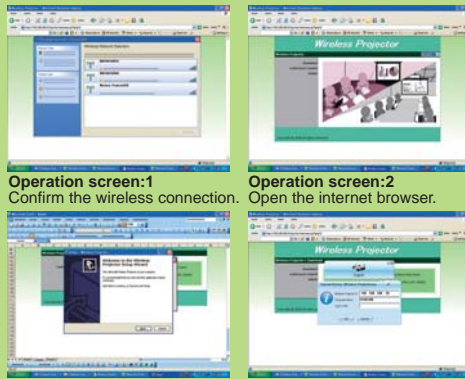
Functional Performance at its Best

- ▶ Bright 3000 ANSI lumens
- ▶ 2000:1 rich contrast ratio
- ▶ Center lens design for symmetrical installation
- ▶ Splash screen and wall screen support
- ▶ Time-saving instant shut down feature
- ▶ DVI Connectivity
You can project native digital signals in all its full high-definition glory via the XD530U DVI input source.
- ▶ Closed caption for the hearing impaired



Splash screen

- ▶ Simple Wireless
It is not necessary to manually insert a CD-ROM* on your system, since all the necessary installation files can be downloaded.
In just four simple steps you can access your projector wirelessly, making installation a snap.



Operation screen:1 Confirm the wireless connection.
Operation screen:2 Open the internet browser.
Operation screen:3 Download and install the software.
Operation screen:4 Input the login code and start showing the image wirelessly.

*A wireless LAN connection between the projector and personal computer is necessary.

**Windows OS is required for wireless connectivity.

Easy Maintenance & Enriched Security Features

- ▶ Top-access lamp cover for easy lamp replacement
- ▶ Filter-free design
- ▶ Enhanced security features with reinforced anchor bars and password protection



Top Access Lamp Cover

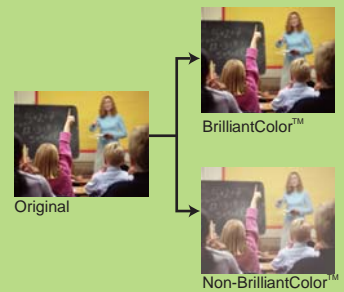
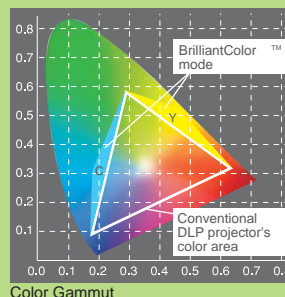
NEW

Mobile XGA
XD530U

BrilliantColor™ Technology and Mitsubishi Electric's Engineering Yields Superior Color Performance

BrilliantColor™ Technology is Texas Instruments latest innovation in producing amazing rich and vibrant colors. At Mitsubishi Electric, we developed a 6-segment color wheel that includes the colors of R,G,B,W,Y,C. Apart from the typical red, green, blue and white, we added yellow and cyan segments to display a wider color spectrum. In addition, we coded our color algorithms to emphasize brightness or color modes, designed to match the environment where the XD530U is used. Together with selective lamp powered modulation techniques, the XD530U with BrilliantColor™ technology acts intelligently to boost colors to improve the intensity and vibrancy of an entire display. For instance, when projecting an already-bright screen image, the lamp is programmed to provide brighter, more vivid colors. In contrast, if the image shows genuine color reproduction, the algorithm delivers just the right colors with the appropriate radiance for maximum visual impact.

*BrilliantColor is a trademark of Texas Instruments.



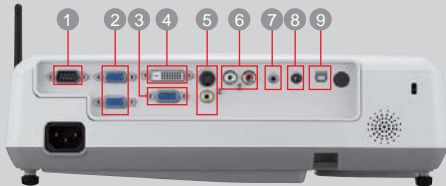


Mobile XGA XD530U

NEW



Input and Output Terminals



- 1 Serial RS-232C
- 2 PC / Component Video input (mini D-sub 15pin)
- 3 PC / Component Video output
- 4 DVI-D (with HDCP)
- 5 S-Video / RCA
- 6 Audio input [RCA jack (L/R)]
- 7 Audio input (stereo mini jack)
- 8 Audio output
- 9 USB terminal for Page Up/Down

Specifications

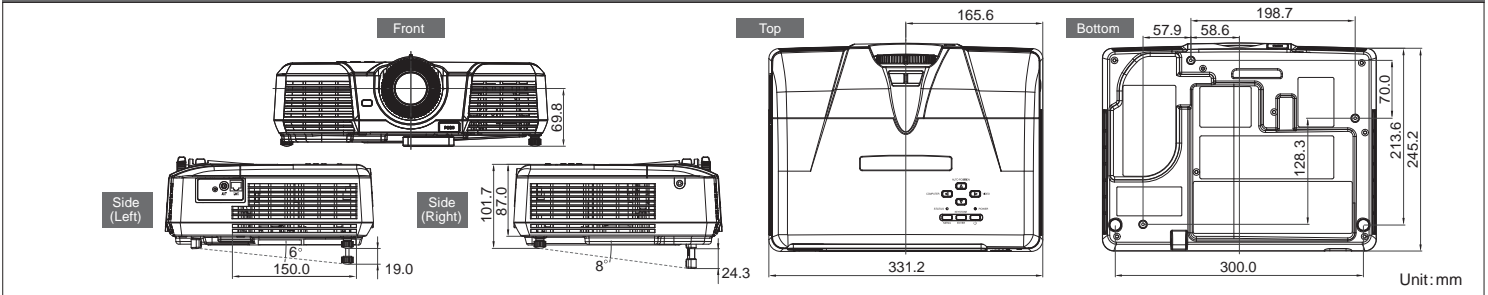
Model	XD530U	
Display technology	0.55"1-Chip DMD, 12 deg. LVDS, DDP2230	
Resolution	1024 x 768 (total 786,432 pixels)	
Brightness	3000lm	
Contrast ratio	2000:1 (on/off)	
Projection lens	f=18.4 ~22.0 mm, F=2.5-2.8	
Offset axis	14.3 : -1	
Throw ratio	1.62 ~ 1.96	
Picture Size	40"~ 300"	
Source lamp	230W (Shut Off Time 3000Hrs) with Low Mode, 280W (Shut Off Time 2000Hrs) with Standard Mode	
Computer compatibility	640 x 480 ~ 1280 x 1024 (Compressed), True: 1024 x 768, include WXGA, Sync on green available	
Input signal system	Video	NTSC / NTSC4.43 / PAL (including PAL-M, N) / SECAM / PAL-60 Component Video : 480i/p (525i/p), 576i/p (625i/p), 720p (750p), 1080i (1125i 60Hz), 1080i (1125i 50Hz)
	PC	Windows 2000 / XP / Vista*
Input terminals	RGB: mini D-sub15pin x 2, DVI-D (with HDCP) x 1, Video : RCA x 1 + S-video x 1 Audio: stereo mini jack (φ 3.5mm) x 1, RCA jack (L/R) x 1	
Output terminals	RGB: mini D-sub15pin x 1, Audio: stereo mini jack (φ 3.5mm) x 1	
Communication terminals	RS-232C (D-sub 9pin) x 1, USB terminal for Page Up/Down x 1	
Audio speaker	2W mono	
Dimensions(WxHxD)	332 x 102 x 250 mm / 13.1 x 4.0 x 9.8 inch (excluding height adjustment)	
Weight	3.4kg / 7.5lbs	
Power supply	AC100-240V, 50/60Hz	
Optional lamp	VLT-XD520LP	
Warranty	3-Years Parts/Labor, 3-Years Express Replacement Assistance, 1-Year or 500 hours lamp warranty (whichever comes first)	
Accessories	Ceiling Mount (PROJ-UCM-PRO2 - Universal Ceiling Mount), Hard Shell Rolling Case (DKT1-ATAC), Soft Carrying Case (XL1-SSCC), Soft Rolling Case (DKT1-SRCC)	

Wireless Antenna and RJ45 Terminal



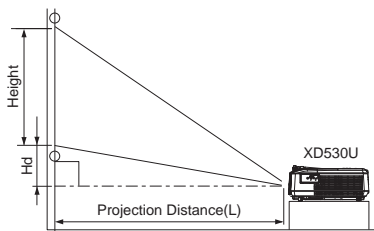
Wireless antenna and RJ45 terminal incorporated into the side of the projector.
 *RJ45 terminal is not for control, but used only for sending images from computer.
 **Windows OS required for wireless operation.

Dimensions



Screen size and Projection distance

As seen from the side



Screen size chart

Screen (4:3 aspect ratio)					Distance from screen (L)		Height projected image (Hd)				
Diagonal size	Width (W)	Height (H)	Shortest	Longest	inch	m	inch	cm			
40	102	32	81	24	61	51	1.3	62	1.6	1.8	5
60	152	48	122	36	91	77	2.0	94	2.4	2.7	7
80	203	64	163	48	122	103	2.6	125	3.2	3.6	9
100	254	80	203	60	152	129	3.3	157	4.0	4.5	11
150	381	120	305	90	229	195	4.9	236	6.0	6.8	17
200	508	160	406	120	305	260	6.6	315	8.0	9.0	23
250	635	200	508	150	381	326	8.3	394	10.0	11.3	29
300	762	240	610	180	457	391	9.9	-	-	13.5	34

Screen (16:9 aspect ratio)					Distance from screen (L)		Height projected image (Hd)				
Diagonal size	Width (W)	Height (H)	Shortest	Longest	inch	m	inch	cm			
40	102	35	89	20	50	56	1.4	68	1.7	5.2	13
60	152	52	133	29	75	84	2.1	102	2.6	7.9	20
80	203	70	177	39	100	113	2.9	137	3.5	10.5	27
100	254	87	221	49	125	141	3.6	171	4.4	13.1	33
150	381	131	332	74	187	213	5.4	258	6.5	19.6	50
200	508	174	443	98	249	284	7.2	344	8.7	26.2	66
250	635	218	553	123	311	356	9.0	430	10.9	32.7	83
300	762	261	664	147	374	427	10.8	-	-	39.3	100

The above numbers are approximate, and may be slightly different from the actual measurements.

MITSUBISHI DIGITAL ELECTRONICS AMERICA, INC.

Presentation Products Division
 Phone: 888.307.0349
 Email: ppdinfo@mdea.com
 www.mitsubishi-presentations.com



PRESENTATION PRODUCTS

MITSUBISHI ELECTRIC SALES CANADA, INC.

Information Technologies Group
 Phone: 905.475.7728
 www.mitsubishielectric.ca